

Ceiling-concealed

(PEY-SP SERIES)



PEY-SP18/24/30/36/42/48JA



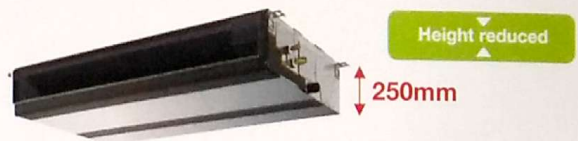
optional



The thin, ceiling-concealed indoor units of the PEY-SP Series are the perfect answer for the air-conditioning requirements of buildings with minimum ceiling installation space and wide-ranging external static pressure. Energy-saving efficiency has been improved, thereby reducing electricity consumption and contributing to a further reduction in operating cost.

Compact Indoor Units

For all models, unit height is unified to 250mm. Compared to the previous model, height has been reduced, allowing installation in tight spaces such as ceiling cavities or drop-ceilings.

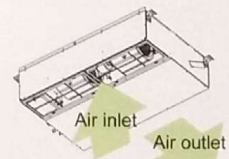
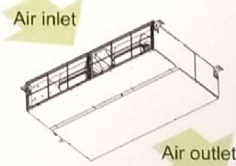


Air Inlet

Units with bottom inlets make more noise than those with rear inlets. It is recommended that the rear inlet be selected when installing a unit in a room that should be quiet, such as a bedroom.

(1) Rear inlet

(2) Bottom inlet



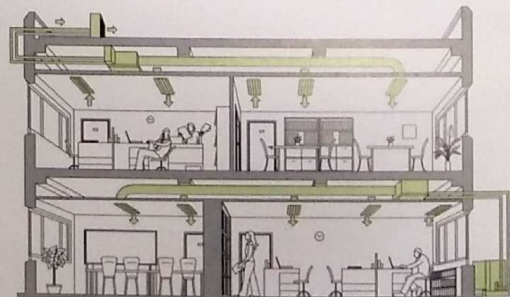
Wide Selection of Fan Speeds and External Static Pressure

Five-stage external static pressure conversions and three fan speed selections are available. Capable of being set to a maximum of 125Pa, units are applicable to a wide range of building types.

External static pressure setting

Series	18	24	30	36	42	48
PEY-SP-JA	35/50/70/100/125Pa					

Flexible duct design



Features at a glance

Installation & Maintenance	Comfort	Others
<ul style="list-style-type: none"> • Chargeless system • Smooth installation • Self-diagnostic function 	<ul style="list-style-type: none"> • Computerized dehumidifier • Quiet operation 	<ul style="list-style-type: none"> • System control • Auto restart • Outdoor unit max. operating temp. of 52°C

CONTROL TECHNOLOGIES



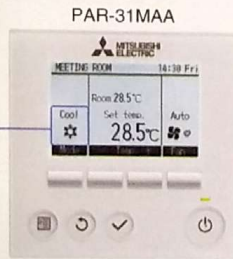
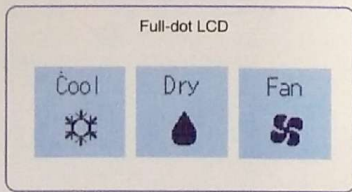
PAR-31MAA (Optional)

User-friendly Deluxe Remote Controller with Excellent Operability and Visibility

Full-dot Liquid-crystal Display Adopted

Easier to read thanks to use of a full-dot liquid-crystal display with backlight, and easier to use owing to the adoption of a menu format that enabled the number of operating buttons to be reduced.

Display Example [Operation Mode]



Easy-to-Read & Easy-to-Use

Multi-language

Multi-language Display
Control panel operation in eight different languages
Choose the desired language from among the following.



Energy-efficient Control

Operation Control Functions

Auto-return

Prevents wasteful operation by automatically returning to the preset temperature after specified operating time

After adjusting the initial temperature on a hot day, it is easy to forget to return the temperature setting to its original value. The Auto-return function automatically resets the temperature back to the original setting after a specified period of time, thereby preventing overcooling. The Auto-return activation time can be set in 10-minute units, in a range between 30 and 120 minutes.

*Auto-return cannot be used when Temperature Range Restriction is in use.

Night Setback

Keep desired room temperatures automatically

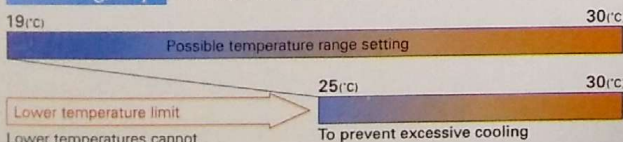
This function monitors the room temperature and automatically activates the cooling mode when the temperature rises above the preset maximum temperature setting.

Temperature Range Restriction

Temperature Range Restriction prevents overcooling

Using a temperature that is 1°C higher for cooling results in a 10% reduction in power consumption.* Temperature Range Restriction limits the maximum and minimum temperature settings, contributing to the prevention of overcooling. *In-house calculations

Cooling/Dry (Setting example of minimum temp. at 25°C)



Recommended for **Office** **Restaurant**

Auto-off Timer

Turns cooling off automatically after preset time elapses

When using Auto-off Timer, even if one forgets to turn off the unit, operation stops automatically after the preset time elapses, thereby preventing wasteful operation. Auto-off Timer can be set in 10-minute units, in a range between 30 minutes and 4 hours. Eliminates all anxiety about forgetting to turn off the unit.

Recommended for **Meeting room** **Changing room**

Operation Lock

Fixed temperature setting promotes energy savings

In addition to operation start/stop, the operation mode, temperature setting and air-flow direction can be locked. Unwanted adjustment of temperature settings is prevented and an appropriate temperature is constantly maintained, leading to energy savings. This feature is also useful in preventing erroneous operation or tampering.

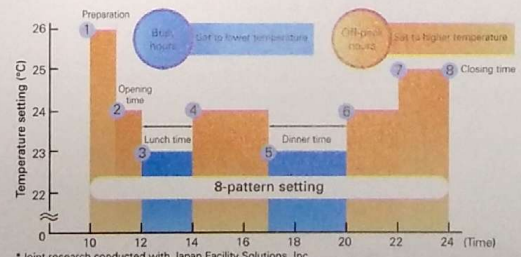
Recommended for **Office** **School** **Public hall**
Hospital **Computer server facility**

Weekly Timer

Set up to 8 patterns per day including temperature control

The Weekly Timer enables the setting of operation start and stop times and adjusting the temperature as standard features. Up to 8 patterns per day can be set, providing operation that matches the varying conditions of each period, such as the number of customers in the store.*Weekly Timer cannot be used when On/Off Timer is in use.

Setting Example (restaurant in summer time)



*Joint research conducted with Japan Facility Solutions, Inc.

SPECIFICATIONS

Ceiling-concealed (50Hz)

PEY-SP SERIES

Models		PEY-SP18JA	PEY-SP24JA	PEY-SP30JA	PEY-SP36JA	PEY-SP42JA	PEY-SP48JA		
Cooling capacity	kW	5.3	7.1	8.8	10.6	12.3	14.1		
Cooling capacity	BTU/h	18,000	24,000	30,000	36,000	42,000	48,000		
Total input	kW	1.72	2.16	2.90	3.31	4.59	5.73		
ISEER	W/W	4.05	4.29	4.02	4.07	3.67	3.43		
Indoor unit	Power supply	1ph 220-240V 50Hz							
	External finish	Galvanized sheet							
	Airflow (low-Med2-Med1-high)	CFM	425-510-600	620-740-885	850-1025-1200	1040-1225-1485			
	External static pressure	Pa	35-50-70-100-125						
	Operation contro	Remote control							
	Noise level (low-med2-med1-high)	dB (A)	30-35-39	30-34-39	33-38-42	36-40-44			
	Unit drain pipe (outer diameter)	mm	32						
	Dimensions	W	mm	900	1100	1400			
		D	mm	732					
		H	mm	250					
	Weight	kg	27	29	38	39			
	Control wiring (Copper)	Sq.mm	3C x 1.5	3C x 1.5	3C x 1.5	3C x 1.5			
Remote control cable size (copper)	Sq.mm	2C x 0.3	2C x 0.3	2C x 0.3	2C x 0.3				
Outdoor unit	Model name	SUY-SA18VA	SUY-SA24VA	SUY-SA30VA	PUY-SP36YKA	PUY-SP42YKA	PUY-SP48YKA		
	Power supply	1ph 220-240V 50Hz			3ph 380-415V 50Hz				
	External finish	Munsell 3.0Y 7.8/1.1							
	Refrigerant (R410A) control	Linear expansion valve							
	Airflow	CFM	953	1625		2648		3071	
	Noise level	dB (A)	47	52	54	52	53	56	
	Dimensions	W	mm	800	840		1050		
		D	mm	285	330		330		
		H	mm	550	880		981		
	Weight	kg	32	49	47	73			
	Max. height difference	m	12	15		30			
	Max. piping length	m	20	30		50			
	Pipe size (outer diameter)	mm	Liquid: 6.35 Gas: 12.7	Liquid: 9.52 Gas: 15.88		Liquid: 9.52 Gas: 15.88			
	Power Cable (Copper)	Sq.mm	3C x 2.0	3C x 2.5		5C x 1.5			
	ODU Breaker Size	Sq.mm	16	20		16			
Guaranteed Operating Range	Upper limit (DB)	52							
	Lower limit (DB)	18							

- Rating conditions Cooling - Indoor: 27 (80)DB, 19 (66)WB, Outdoor: 35 (95)DB
- Refrigerant piping length (one-way): 7.5m(25ft)
- Total input based on the indicated voltage (indoor/outdoor): 1ph 230V 50Hz, 3ph 400V 50Hz